

Mount de Sales Academy's Site Plan

Phase I

A. New Convent

Estimated \$2 million

(\$1.5 million construction and \$500,000 maintenance endowment)

B. Security Fencing, Lighting, and Surveillance Cameras

Estimated \$1 million

C. HVAC System for 1852 Building

Estimated \$1 million

Phase II

Regulation Turf Athletic Field

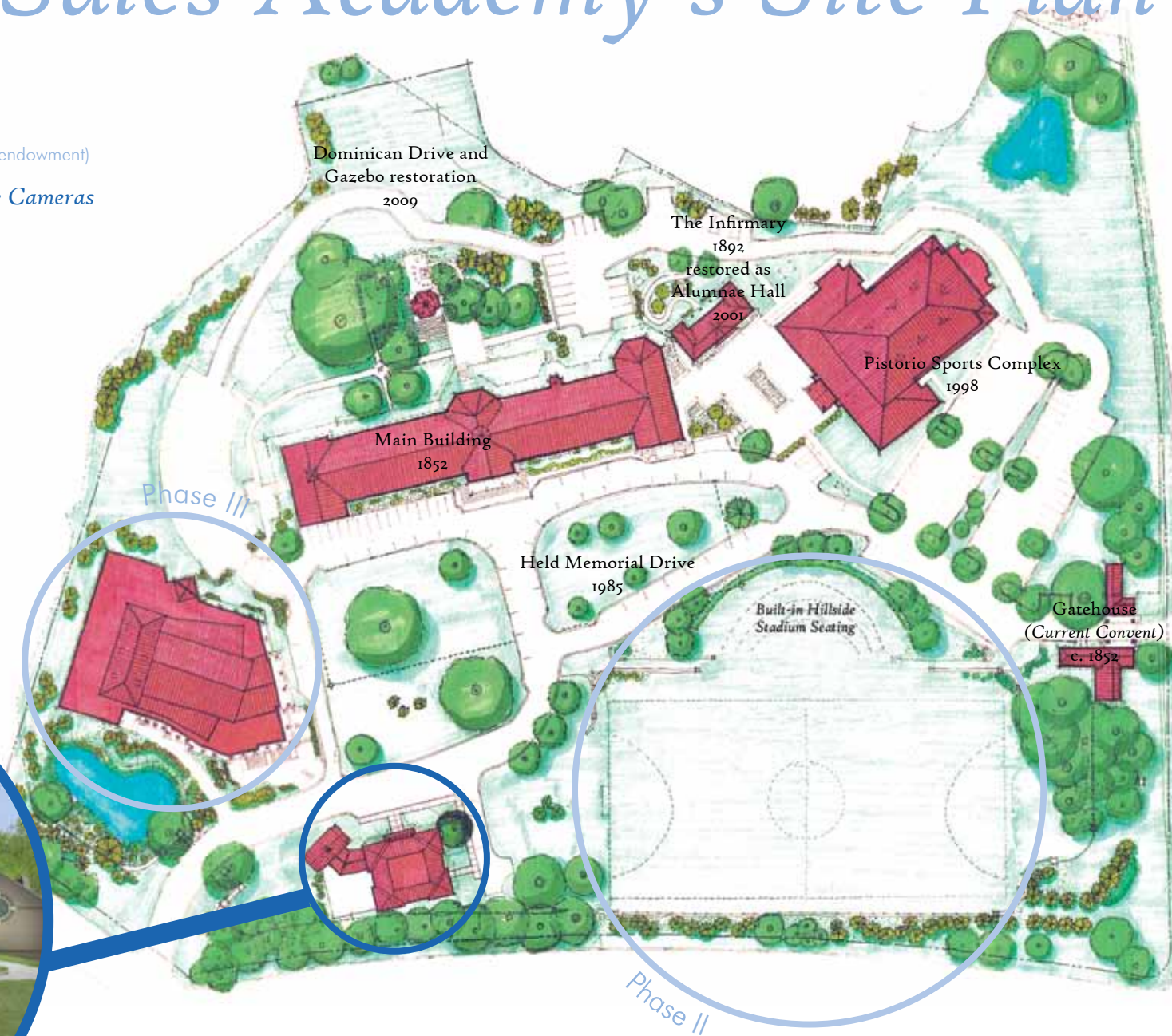
with built in Hillside Stadium Seating

Estimated \$1.5 million

Phase III

Performing Arts Building

Estimated \$9 million



Anchored in Excellence; Charting our Future
A Campaign for Mount de Sales Academy

For more information or to offer your support, please contact Sister Philip Joseph, O.P. at spj@mountdesales.org or 410.744.8498.

